

State of Wyoming Corner Record

CORNER PERPETUATION AND FILING ACT,

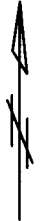
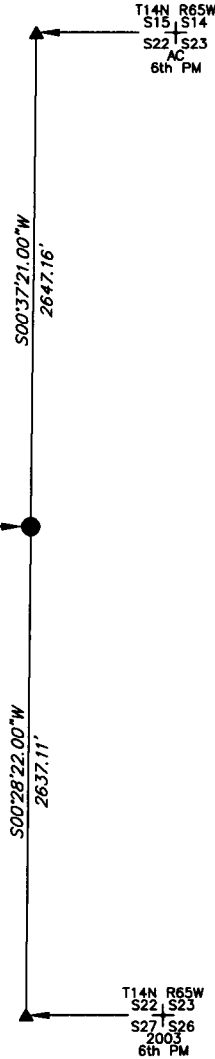
Regulations of the Board of Registration for Professional Engineers and Land Surveyors.)
Reverse side of this form may be used if more space is needed.

Record of original survey and citation of source of historic information (if corner is lost or obliterated). Description of corner monumentation evidence found and/or monument and accessories established to perpetuate the location of this corner. Sketch of relative location of monument, accessories, and reference points with course and distance to adjacent corner(s) (if determined in this survey). Method and rationale for reestablishment of lost or obliterated corner.

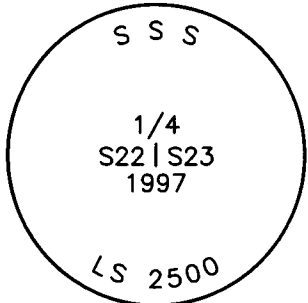
NOTE:
LINES SHOWN ARE BETWEEN MONUMENTS AND MAY OR MAY NOT BE SECTION OR SECTION SUBDIVISION LINES.

FOUND THE MONUMENT FOR THIS 1/4 CORNER OF MAXIMUM CONTROL WHICH IS A 2.5" PRIVATE ALUMINUM CAP PROTRUDING 0.3' ABOVE THE GROUND. CAP IS MARKED LS #2500.

THE MONUMENT IS FOR: T14N R65W 1/4 S22 | S23 1997 6th PM



SCALE 1"=1000'
(EXCEPT IN TRIVIAL CASES)
BEARINGS ARE RELATED TO WGS 84 WITH GPS OBSERVATIONS
DRAWN BY: SM
P.C. B. LOWREY
COUNTY: LARAMIE



THE MONUMENT IS MARKED

CORNER MONUMENT SYMBOLS

- RECORD IS FOR THIS CORNER MONUMENT.
- ▲ A RELATED CORNER OR WC MONUMENT.

Date of Field Work: 09/07/2014 Office Reference: _____

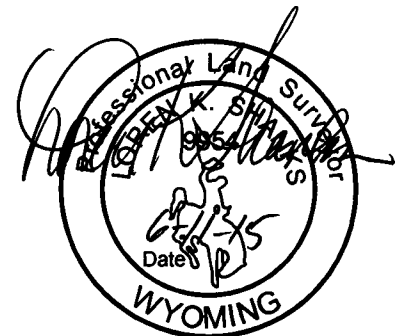
CROSS INDEX DIAGRAM

1 2 3 4 5 6 7 8 9 10 11 12 13 14 15 16 17 18 19 20 21 22 23 24 25																										
A																										A
B																										B
C		6		5				4					3													C
D																										D
E																										E
F																										F
G		7		8				9					10													G
H																										H
J																										J
K																										K
L		18		17				16					15													L
M																										M
N																										N
O																										O
P		19		20				21					22	●												P
Q																										Q
R																										R
S																										S
T		30		29				28					27													T
U																										U
V																										V
W																										W
X		31		32				33					34													X
Y																										Y
Z																										Z
1 2 3 4 5 6 7 8 9 10 11 12 13 14 15 16 17 18 19 20 21 22 23 24 25																										

Firm/Agency, Address
UELS, LLC
85 South 200 East
Vernal, Utah 84078

Telephone Number: 435-789-1017

This corner record was prepared by me or under my direction and supervision.
SEAL & SIGNATURE



RECP #: 670051
RECORDED 9/22/2015 AT 10:36 AM BK# 2465 PG# 59
Debra K. Lathrop, CLERK OF LARAMIE COUNTY, WY PAGE 1 OF 1

Corner Name: 1/4 CORNER OF MAXIMUM CONTROL EAST 1/4 CORNER OF SECTION 22 Section: 22 T. 14N R. 65W ; 6TH P.M. Cross Index No.: P-17
SBRPEPLS/PLSW: March 1994 (CLCR...SJA)